



*Gum Nut Preschool*  
and Child Care

Monthly news sheet - April



We respectfully acknowledge the Traditional Owners of the land where we learn and play, the Wurundjeri people of the Kulin Nation. We pay respect to their Elders past, present and emerging.

## CENTRE CALENDER

### April

<b>1st</b>	Easter Monday - Public Holiday (Centre closed)
<b>2nd</b>	International Childrens Book Day
<b>4th</b>	World Stray Animal Day
<b>8th-18th</b>	Nature Play Week
<b>7th</b>	World Health Day
<b>15th-21st</b>	World Creativity & Innovation week
<b>18th</b>	World Heritage Day
<b>20th</b>	Explore & Learn Family Day
<b>22nd</b>	World Earth Day
<b>25th</b>	ANZAC Day - Public Holiday (Centre closed)
<b>28th</b>	Pay It Foward Day
<b>29th</b>	International Dance Day

### May

<b>1st</b>	Kinder Info night for 2025 - 7pm
<b>4th</b>	International Firefighters Day
<b>5th</b>	World Laughter Day
<b>6th - 10th</b>	International Compost Awareness Week
<b>8th-18th</b>	World Earth Day
<b>12th</b>	Mother's Day
<b>13th - 19th</b>	National Families Week
<b>17th</b>	Endangered Species Day
<b>26th</b>	National Sorry Day
<b>27th - 3rd</b>	National Reconciliation Week



Centre opening hours.

7:30 AM - 6:00 PM



PH: 9499 4410



[office@gumnutpreschool.com.au](mailto:office@gumnutpreschool.com.au)



[gumnutpreschool.com.au](http://gumnutpreschool.com.au)



kids do better outside!

**8th - 18th April**

Nature play is time spent playing outdoors in nature and true nature play is free and unstructured play that is led completely by the child, not an adult. Sadly, children these days spend a lot less time playing outside due to our current lifestyles, time limitations, too much focus on structured activities and concerns about risk and safety. But most adults would think back on their childhood and favorably recall memories about times spent outdoors, playing and exploring freely.

Nature play is open-ended. Things found in nature that are included in play can be used in so many ways. This is unlike many man-made toys that exist today, that are capable of being played with in limited ways only. The outdoor environment is vast and variable, offering numerous ways of playing in it. Nature empowers children to play in nature in a way that is best for them as growing and developing individuals.



Follow the links below for more information and some fun nature based activities you can do at home.



[Why is nature play important?](#)



[Links to nature play events in Vic](#)

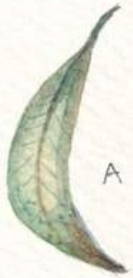


[Fairy mud activity.](#)



[Leaf rubbing activity.](#)

# NATURE SCAVENGER HUNT



A curved leaf



A spider web



A spotted rock



Something yellow



A track or footprint



A flying insect



A seed or seed pod



A hole



A bug or insect



A funny shaped cloud



Something beautiful



An evergreen tree



A feather



Three types of birds



some water



A stick shaped like a letter of the alphabet



tree sap



Something smooth

# Family Input



**At Gum Nut we believe in working together and recognise the value of family input. It allows us to foster a sense of belonging for both parents and child. When this collaboration happens, it strengthens the child's identity and enhances their learning.**

**The Early Years Learning Framework (EYLF) states, “Educators’ practices and the relationships they form with children and families have a significant effect on children’s involvements and success in learning. Children thrive when families and educators work together in partnership to support young children’s learning.”**

**All of our programs invite parents to participate; you could share an interest or skill, teach a new song, play an instrument or share a cooking activity.**

## TESTIMONIALS

We have recently updated our website and would love to share your families experiences / time at Gum Nut Preschool and Childcare.

If you would like to contribute, please email your feedback through to our office:  
[office@gumnutpreschool.com.au](mailto:office@gumnutpreschool.com.au)

Thank you in advance.

[www.gumnutpreschool.com.au](http://www.gumnutpreschool.com.au)



# ENROLLING IN FOUNDATION (PREP)

Information for parents and carers on when and how to enrol their child in 2025 Foundation (Prep) at a Victorian government primary school.



If your child is turning 5 years old by 30 April 2025 and is eligible to start school next year, it is time to decide where they will go to school.

Victorian governmentschool enrolments in Foundation (Prep) for the 2025 school year will open from Monday 15 April 2024, the start of Term 2.

Families are asked to submit enrolment applications by Friday 26 July 2024.

## HELPFUL LINKS:

[School Zones](#)

[Enrolment Information pack](#)

[Enrolling in a school](#)



# Starting primary school?

Starting school is an exciting time for children, parents and carers.

The first year of primary school is called Foundation or Prep.

To enrol in a Victorian government primary school, follow these steps the year before your child starts school.

## Before filling out an application

Read about when and how to enrol on our website



Make sure your child is the right age to start school



Find your local school and other nearby government schools at [findmyschool.vic.gov.au](https://findmyschool.vic.gov.au)



Contact primary schools to book a tour, visit or for further information



## Applying for Foundation enrolment

Get an application form from the primary school



Gather the required documents



Submit everything to the primary school by the due date (last Friday in July)



Wait for the school to contact you (first 2 weeks of August)



You can find out more, and access translated resources, at:

Enrolling in Foundation (Prep) | Victorian Government



Department of Education



## Centre private Facebook groups:

Please join your child's room private Facebook group, this is where educators share information about the program and for you to connect with other families.

Possum Room

Wombat Room


Koala Room

Magpie Room




Kinder Room

Community

*Gum Nut Preschool  
and Child Care*



# FUNDED KINDER 2025

Don't miss this opportunity to learn about our amazing Kinder programs and how we can support your child's early education journey!

**Explore & Learn**

**SATURDAY 20TH APRIL  
TIME: 9:30am**



Join the Kinder team on an Explore & Learn session at Alphington Wetlands.

Meet at Gum Nut and let the teachers lead the way!

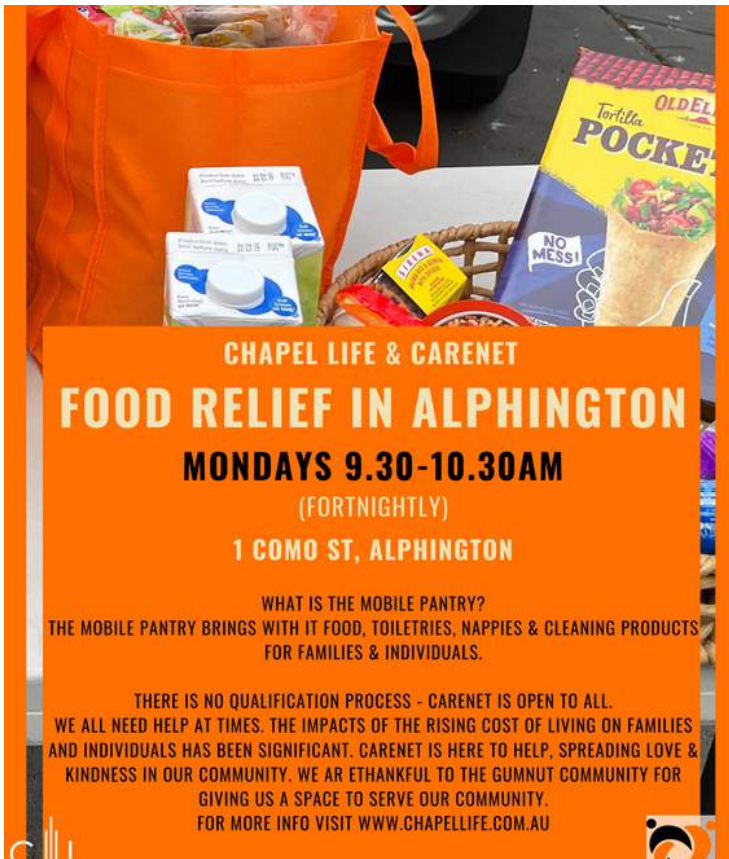
**Information Night**

**WEDNESDAY 1ST MAY  
TIME: 7pm**

Come meet the team and see the Kinder Environment.

1 Como Street, Alphington  
office@gumnutpreschool.com.au   
www.gumnutpreschool.com.au 

# General housekeeping



## IMPORTANT INFORMATION

Please keep the following information up to date:

- Address, phone number, email.
- Dietary requirements, medication and action plan for your child.
- Immunisation history

## EMAILS

Just a friendly reminder that room emails are used for planning purposes only.

For everything else please email the office directly via [office@gumnutpreschool.com.au](mailto:office@gumnutpreschool.com.au)

## GOOGLE REVIEW

We hope your experience with us has been positive and enriching. Would you mind taking a few moments to share your thoughts on Google?

Your feedback helps us improve and lets others know about the quality of care we provide.

We appreciate your feedback!

[office@gumnutpreschool.com.au](mailto:office@gumnutpreschool.com.au)