



Centre opening hours.

7:30 AM - 6:00 PM

office@gumnutpreschool.com.au

PH: 9499 4410

M: 0421286900

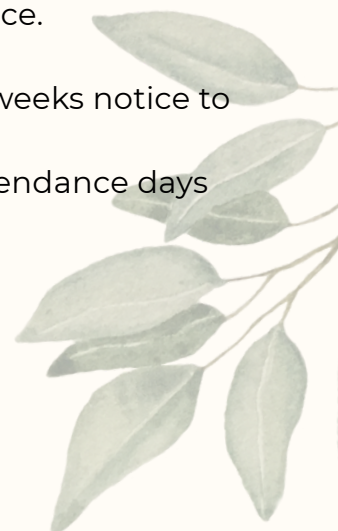


We respectfully acknowledge the Traditional Owners of the land where we learn and play, the Wurundjeri people of the Kulin Nation. We pay respect to their Elders past, present and emerging.



## Reminders

- **Parent Mobile Phones:** Please be reminded that we request that all mobile phones are put away when entering the gate and that no photos are to be taken inside.
- **Centre Information Folders:** All centre information is now placed in folders at the main entrances for your reference. These will be kept at the sign-in table and at the information area near the office. These folders include relevant information on the centre, including opening hours, contact details of the regulatory authority, policies and procedures, etc.
- **Signing in and Out:** It is a legal requirement that parents/guardians sign their children in and out each day. If you do not have a pin please notify the office.
- **Holiday Notification:** We require two full weeks notice to discount your fee for your holiday period. Child must be away for the full week of attendance days (Monday-Friday).



# WHATS HAPPENING

## Term 2 Calendar

### April

20th Term 2 starts  
22nd International Mother Earth Day  
25th ANZAC Day

### May

10th Mothers Day  
11th - 17th National Families Week  
15th Endangered Species Day  
20th World Bee Day  
27th National Sorry Day / Reconciliation week begins / National Simultaneous Storytime

### June

1st Reconciliation Day  
5th World Environment Day  
8th World Oceans Day / King's Birthday Public Holiday (**Centre Closed**)  
11th International Day of Play  
15th-22nd Water Safety Week  
22nd Term 2 Ends

## OUR KITCHEN

### PUMPKIN AND GREEN PEA PENNE

- ✓ VEGAN
- ✓ DAIRY FREE
- ✓ NUT & SOY FREE



#### Ingredients

- Pumpkin
- Onion
- Vegetable stock
- Green peas
- Cannellini beans
- Olive oil

#### Method

- Dice the pumpkin and roast a portion in the oven until it turns golden brown.
- In a pot, combine the remaining pumpkin with onion and sauté in olive oil.
- Add green peas to a pot of water and bring to a boil.
- Incorporate 3 cups of water along with the Cannellini beans, allowing the mixture to simmer.
- Cook the pasta according to the package instructions.
- Once the pumpkin is tender, blend it until smooth.
- Drain the pasta.
- Combine the pumpkin puree with the pasta.
- Fold in the roasted pumpkin and green peas.

Does your family have a favorite recipe, dish, or weekly staple you could share with us? It may even be included in our next newsletter!



# FOCUS ARTICLE

## Nature Play: Growing Curious, Confident Learners at Gum Nut

At Gum Nut, we believe childhood should be rich with wonder, discovery, and connection to the natural world. One of the most powerful ways we bring this philosophy to life is through nature play, an approach to learning that invites children to explore, imagine, and grow through unstructured experiences outdoors.

### *What is Nature Play?*

Nature play involves children engaging directly with natural elements such as soil, water, plants, rocks, and wildlife. Rather than relying solely on structured toys or indoor environments, children are encouraged to climb, dig, build, observe, and create using what nature provides. Whether it's balancing on logs, collecting leaves, or watching insects at work, each experience becomes an opportunity for learning.

### *The Benefits of Nature Play*

- **Physical Development:** Outdoor play promotes strength, coordination, and overall health. Uneven surfaces, climbing opportunities, and open spaces challenge children's bodies in ways indoor environments cannot.
- **Emotional Wellbeing:** Time in nature has a calming effect, helping to reduce stress and anxiety while fostering resilience and confidence.
- **Cognitive Growth:** Nature play encourages curiosity, problem-solving, and creativity. Open-ended environments inspire children to think critically and explore at their own pace.
- **Social Skills:** Collaborative outdoor play supports communication, teamwork, and empathy as children negotiate roles and share discoveries.
- **Environmental Awareness:** Early experiences in nature help children develop respect for the environment and a sense of responsibility for caring for it.

### *Our Philosophy in Action*

Nature play is not an occasional activity, it is embedded in our daily practice. Our learning environment is designed to reflect our commitment to play-based, child-led learning. We provide access to natural materials, outdoor spaces, and opportunities for risk-taking in a safe and supportive setting.

Educators act as facilitators, observing children's interests and extending their learning through meaningful interactions. Whether it's planting in the garden, exploring seasonal changes, or engaging in sensory play with natural textures, every experience is guided by our belief that children learn best when they are active participants in their own learning journey.

By embracing nature play, we are nurturing more than just skills; we are fostering a lifelong connection to the world around us. Children develop a sense of belonging, not only within our centre but within the broader environment they are part of.



# OUR TEAM



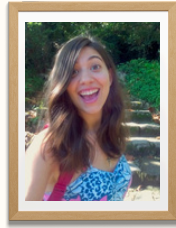
## Possum Room



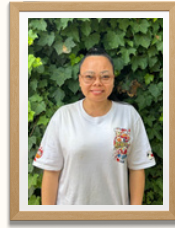
Katie



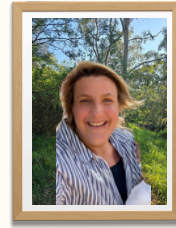
Elisha



Cali

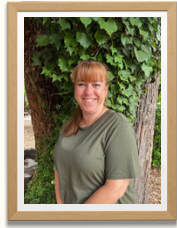


Ranu



Laura

## Wombat Room



Rose



Shamika



Orneeta



Jeet

## Koala Room



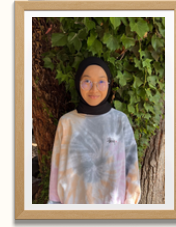
Rasika



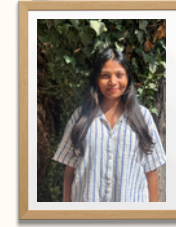
Niaz



Narmada

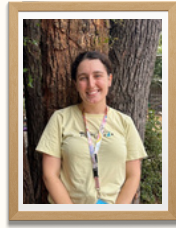


Athirah



Dilumini

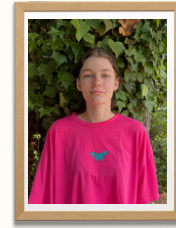
## Magpie Room



Siena



Michelle



DeAnne

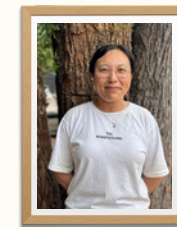
## Kinder Room



Hannah



Mariella

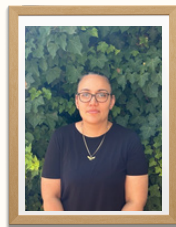


Eva

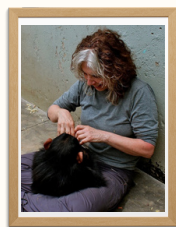


Celeste

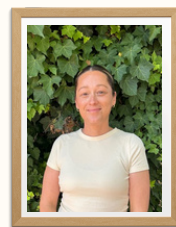
## Office



Tiffany



Maxine



Jess

# Our Community

Hello! I'm Juliet, mum to a little one in the Magpie Room and the maker behind Clover Duck.

I create a baby development toy called The Duck, designed to gently support those early months. It grows with your baby and encourages sensory play and connection – without overwhelming them (or you!).

Each one is handmade by me here in Melbourne using beautiful fabrics and featuring different Australian artists. It's so special to share something created with so much love within our little community.



## **CLOVER:DUCK**

A unique toy designed to nurture growth + development

ASSISTS IN **EARLY DEVELOPMENT**  
MATERNAL HEALTH NURSE **RECOMMENDED**  
PERFECT FOR **NEWBORN + BEYOND**  
**HANDMADE IN MELBOURNE**



[WWW.CLOVERDUCK.COM](http://WWW.CLOVERDUCK.COM)  
CLOVER\_DUCK

